

Cathode

Indirectly heated

Heater

V_h 6.3 V
I_h 0.5 A

Limit Ratings

Maximum heater to cathode voltage	±150 V
Maximum spade to cathode voltage (V _S max.)	125 V
Minimum spade to cathode voltage (V _S min.)	85 V ←
Minimum target to cathode voltage (V _T min.)	50 V
Maximum target to cathode voltage (V _T max.)	300 V
Minimum switching-grid to cathode voltage (V _{SG} min.)	V _S = 125 V 65 V ← V _S = 85 V 45 V ←
Minimum input duration	0.5 μs

Characteristics (V_S = 108 V, R_S = 100 kΩ)

Holding spade current	1.2 mA nom. ←
Target current	10.0 mA nom. ←

Recommended Operating Conditions (for counting up to 1 Mc/S)

V _S	108 V ←
R _S	100 kΩ ± 10%

(Each spade must be connected to a separate load resistor with not more than ½" (10 mm) of connecting lead).

V _T	108 V ←
R _T	4.7 kΩ

(Any number of target connections may be taken to a common target resistor).



Recommended Operating Conditions (for counting up to 1 Mc/S) *cont.*

$V_{SG} = \frac{V_s}{2}$	54 V ←
V_{SG} pulse amplitude	—54 V ←
t pulse	0.5 μ S
R_{SG}	22 k Ω ←
C input	330 pF ←

Alternatively d.c. coupling may be used as shown in circuit LK. 125

* *Note* :- The spade resistance is the total resistance, including resistors for beam formation etc.

Mechanical Data

Mounting position Any: providing that the tube is kept at least 2" from any magnetic material or 4" from a similar tube, a strong magnet or a mu-metal screen.

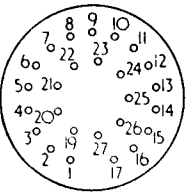
Weight 185 g

Base B26A

N.B. ← Indicates a change from previous data sheets.

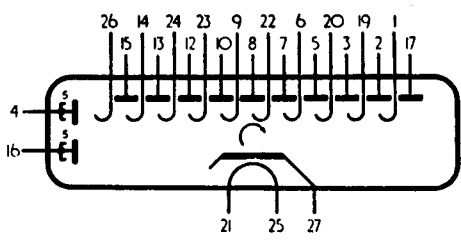
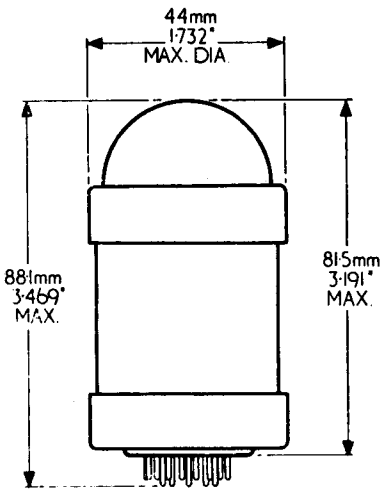
Mechanical Data—cont.

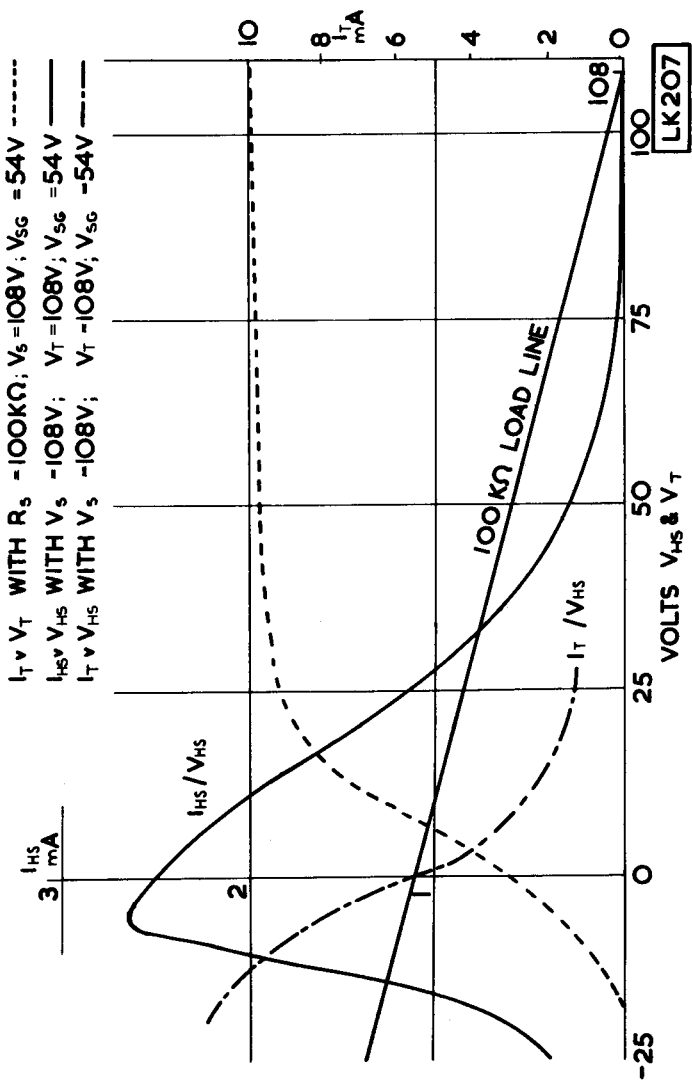
Base Connections
(underside view)



- Pin 1 Spade 0
- 2 Target 9
- 3 Target 8
- 4 Odd Switching grids
- 5 Target 7
- 6 Spade 7
- 7 Target 6
- 8 Target 5
- 9 Spade 5
- 10 Target 4
- 11 Do not connect
- 12 Target 3
- 13 Target 2
- 14 Spade 2
- 15 Target 1
- 16 Even switching grids
- 17 Target 0

- 19 Spade 9
- 20 Spade 8
- 21 Heater
- 22 Spade 6
- 23 Spade 4
- 24 Spade 3
- 25 Heater
- 26 Spade 1
- 27 Cathode





VS10G Holding Spade and Target Characteristics



